



USB 3.0 TO DVI GRAPHIC ADAPTER



Quick Installation Guide
DA-70451

1. Installing the Driver

Caution: DO NOT connect the adapter to your computer before installing the provided driver.

Insert the provided CD into a computer's disc drive and the **AutoPlay** will be launched automatically. If the **AutoPlay** does not appear, locate and double-click on the **Setup.exe** file in the driver folder.

For Windows Vista® / Windows 7® users:

- A. Please click <**Run Setup.exe**> to execute the installer program.
- B. If you encounter a **User Account Control** dialog box when attempting to install a program, enter an administrator password or click <**Allow**> / <**Yes**> to start the installation.
- C. The **License agreement** will be prompted. Click <**I Accept**> to start the driver installation.
- D. Click <**Yes**> to restart or <**No**> to manually restart later, if a promoting to restart computer message appears.

For Windows XP® users:

- A. The **License agreement** will be prompted.
Click <**I Accept**> to start the driver installation.
- B. Click <**Yes**> to restart or <**No**> to manually restart later, if a promoting to restart computer message appears.


2. Making the Connection

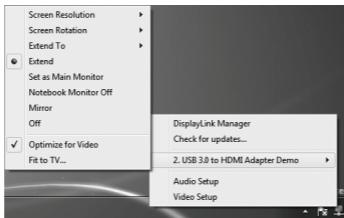
- A. Connect the USB 3.0 Display Adapter to a monitor and a computer. The screen may temporarily go black or flash during this process.
- B. The reminder message will appear on the system tray, when the adapter has been detected by the operating system.

3. Changing the Display Mode

There are several ways to utilize the monitor attached on the adapter. The add-on monitor can be configured to use either “**Mirror mode**”, “**Extended mode**” or be the **Primary** display as described in this section.

Utility:

- Click <  (utility icon) > in the **Windows System Tray**.
- Select a preferred option, and then click it using mouse.



Windows configuration:

Position the mouse anywhere on the computer desktop, right-click and select <**Screen Resolution**> on Windows 7[®], **Personalize** > **Display Settings** on Windows Vista[®] or **Properties** > **Settings** on Windows XP[®].

